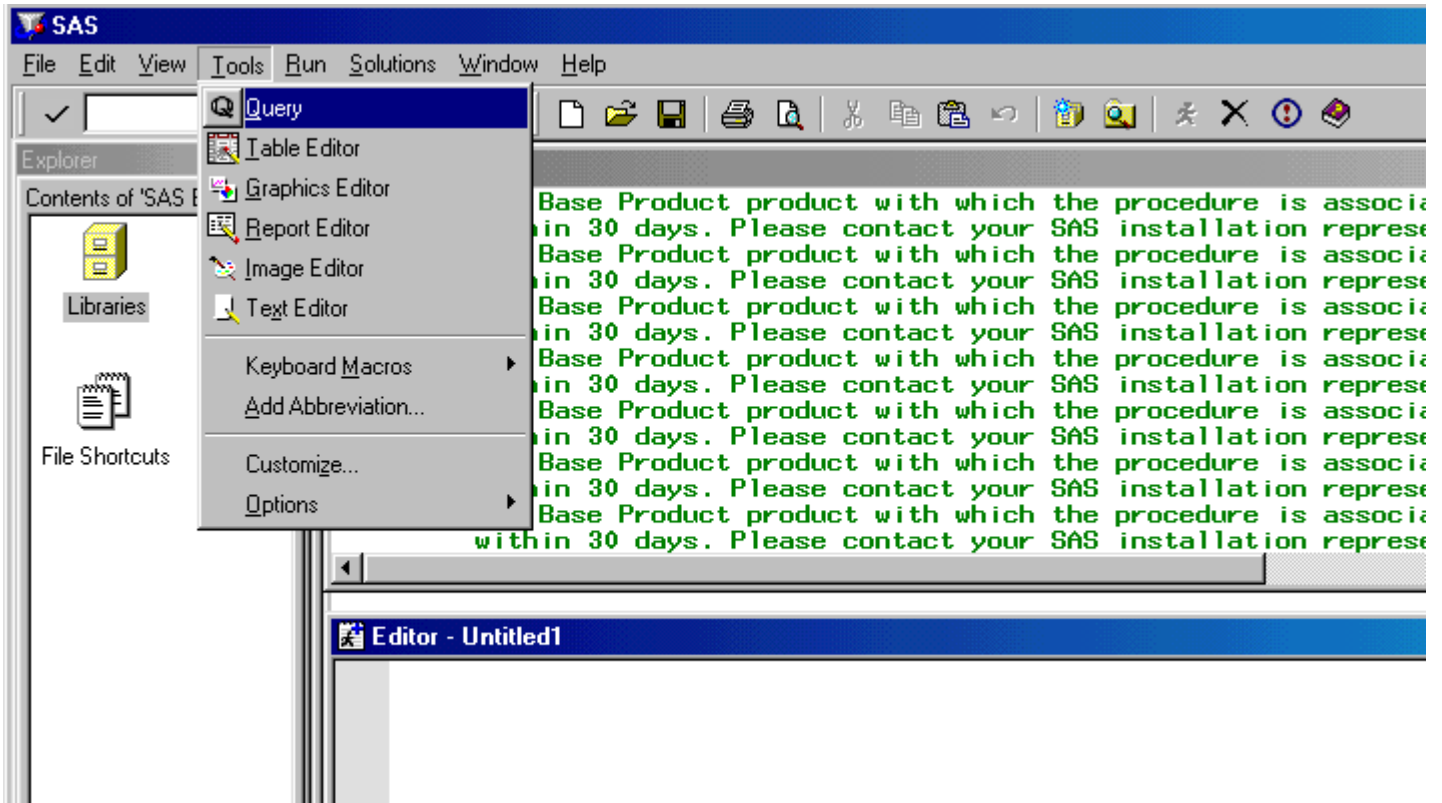


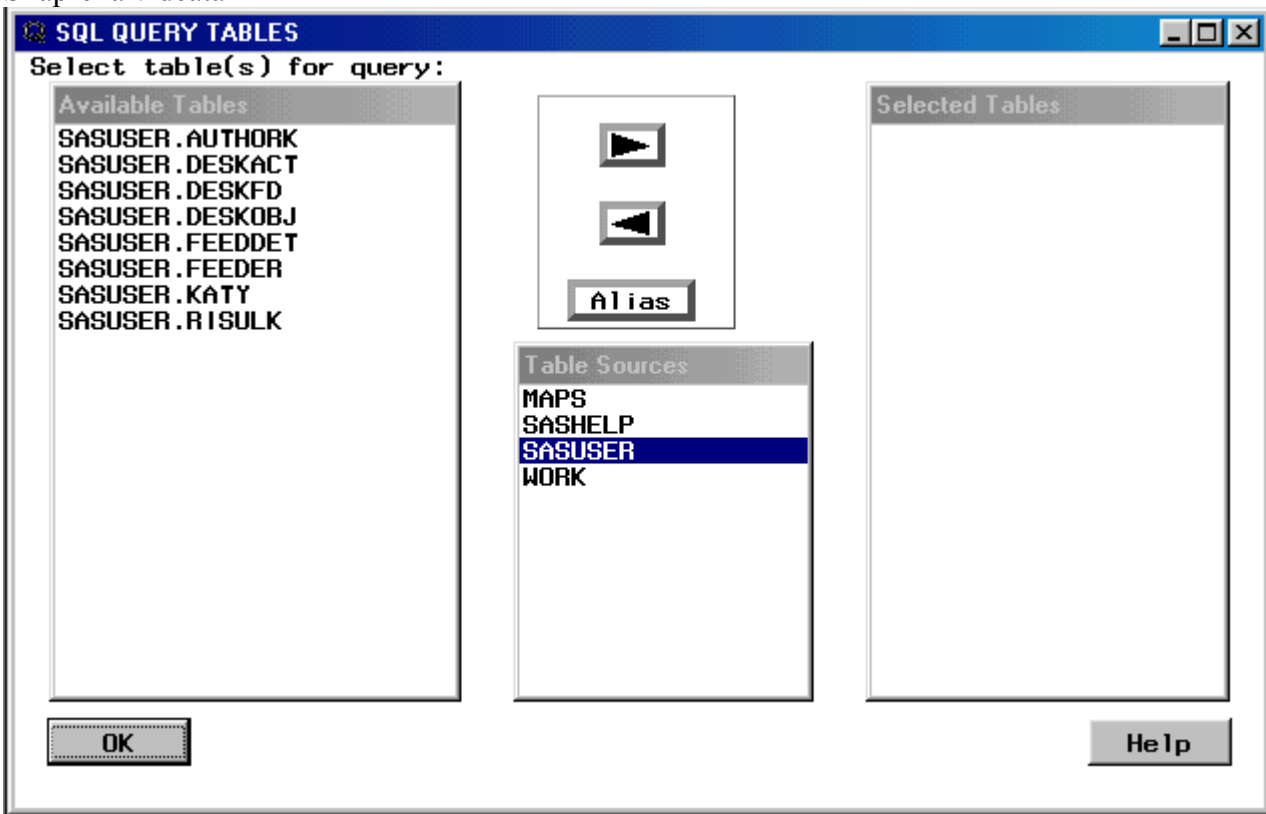
APPENDICE B
DRIVER ODBC E SAS

Una volta creato il collegamento ODBC

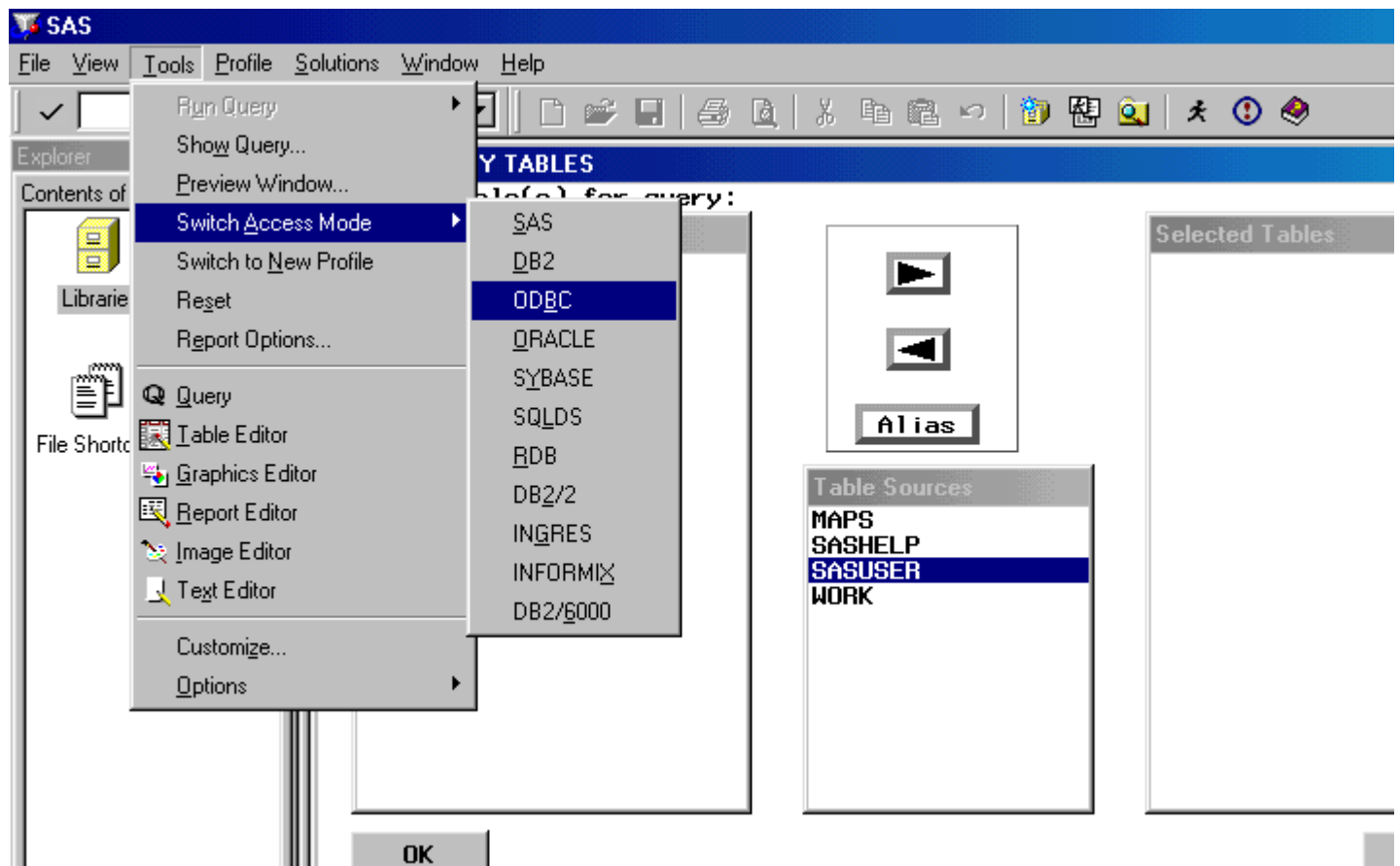
Aprire SAS e Selezionare Tools | Query



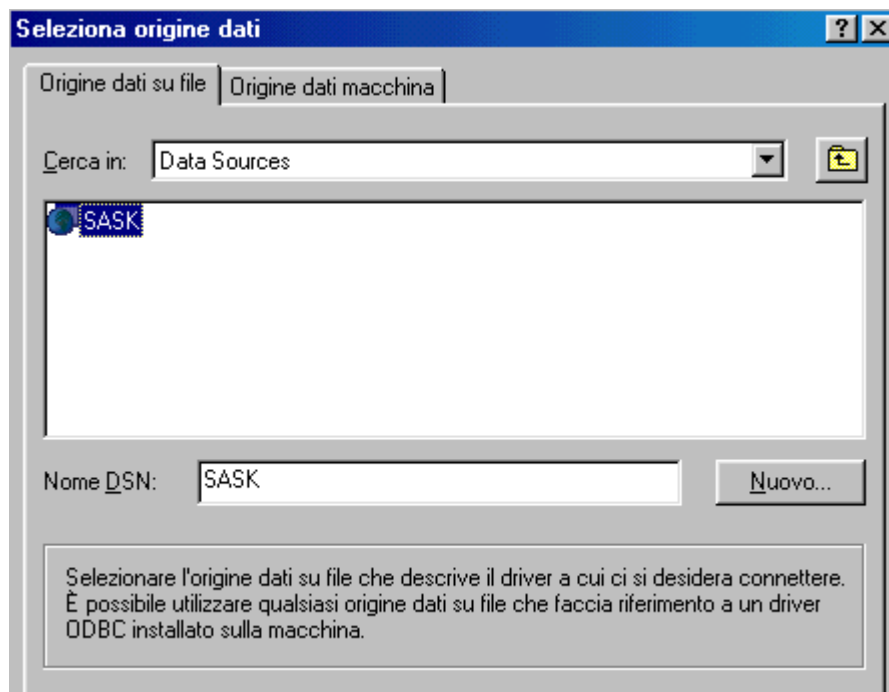
Si apre la videata



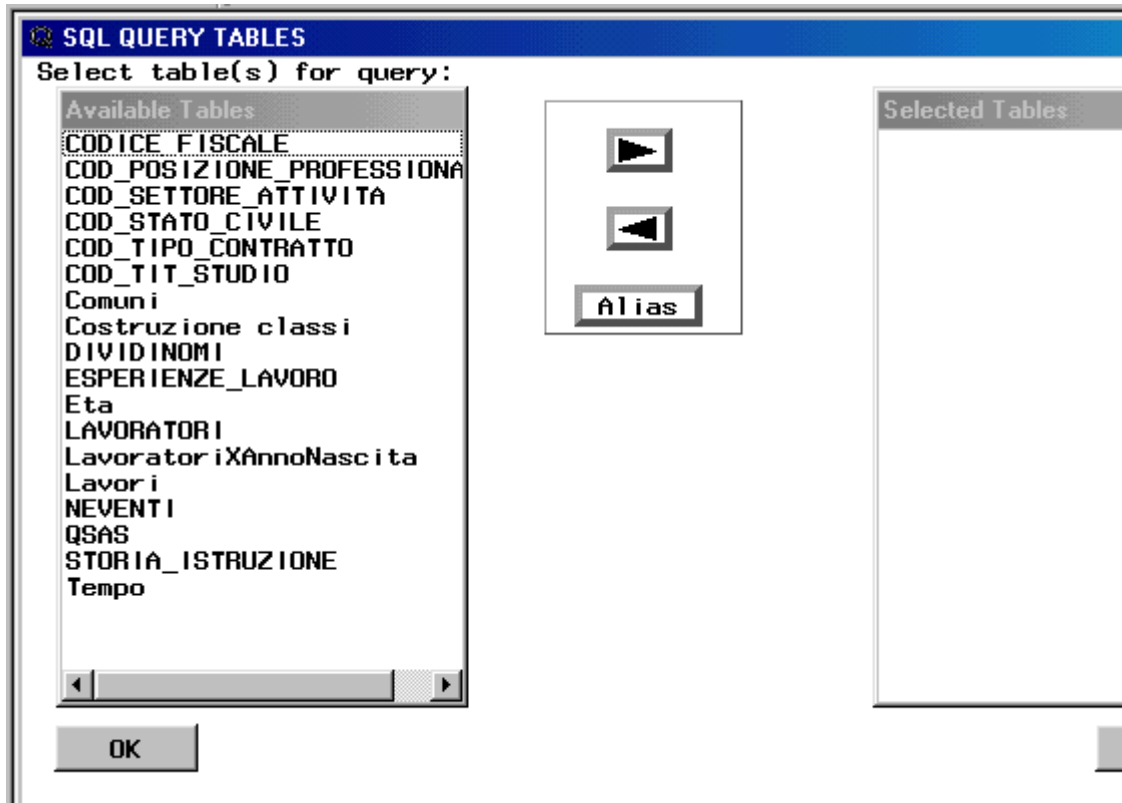
Selezionare Tools | SwitchAccessMode | ODBC



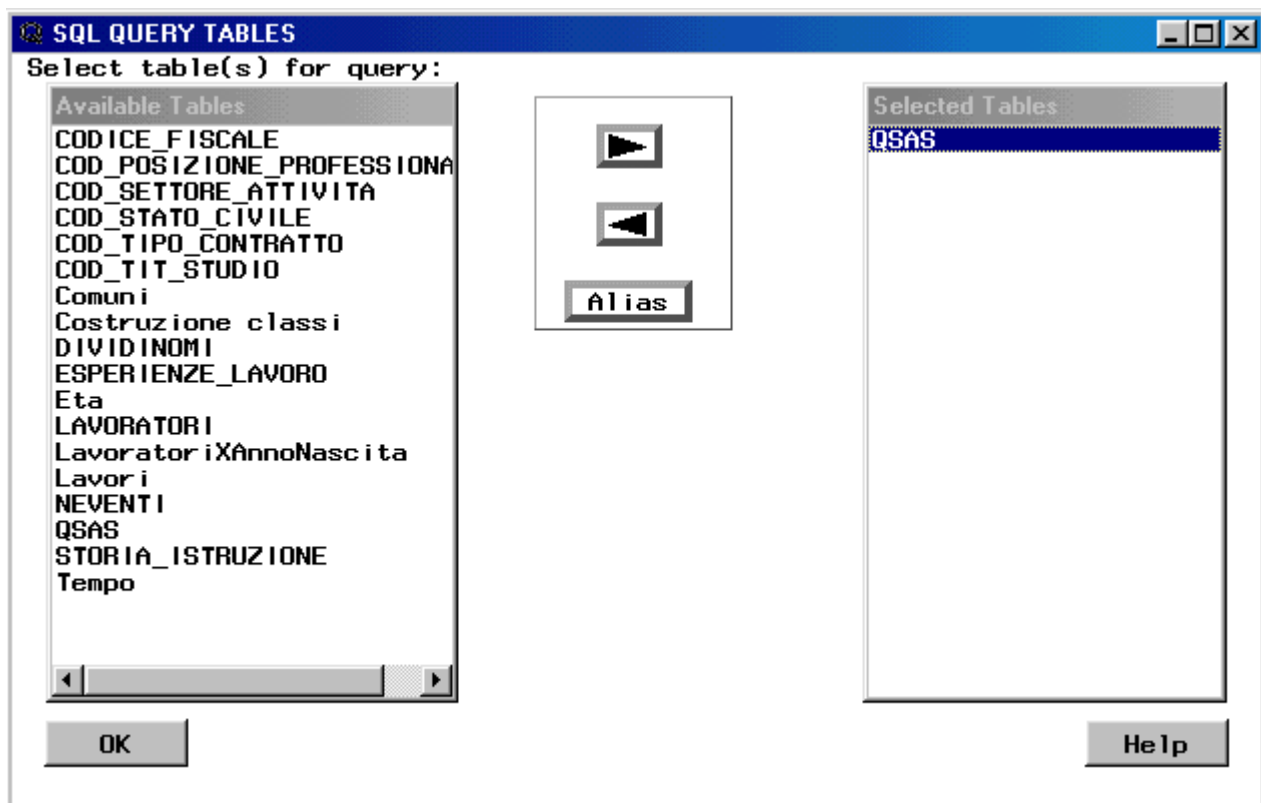
Selezionare il collegamento ODBC precedentemente creato



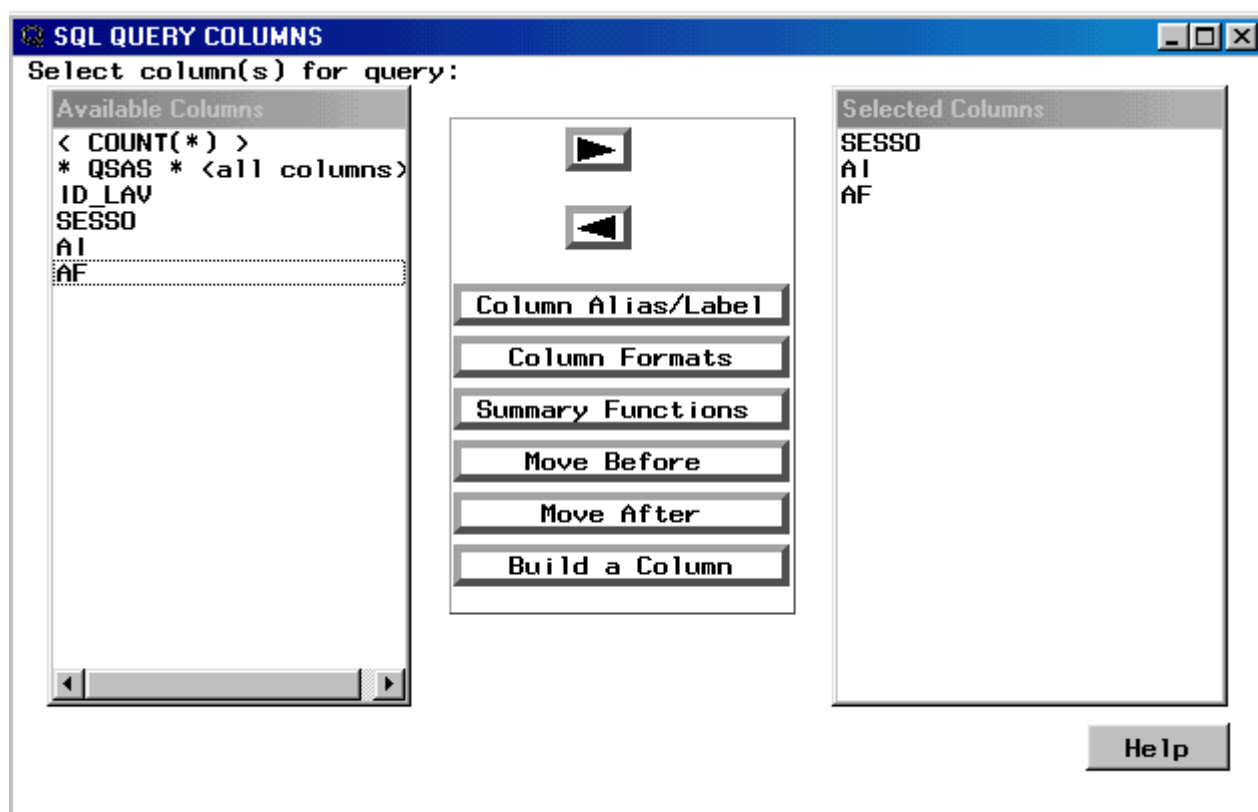
Verrà visualizzato l'elenco delle tabelle e delle query del database



Selezionare la tabella o query che si desidera utilizzare

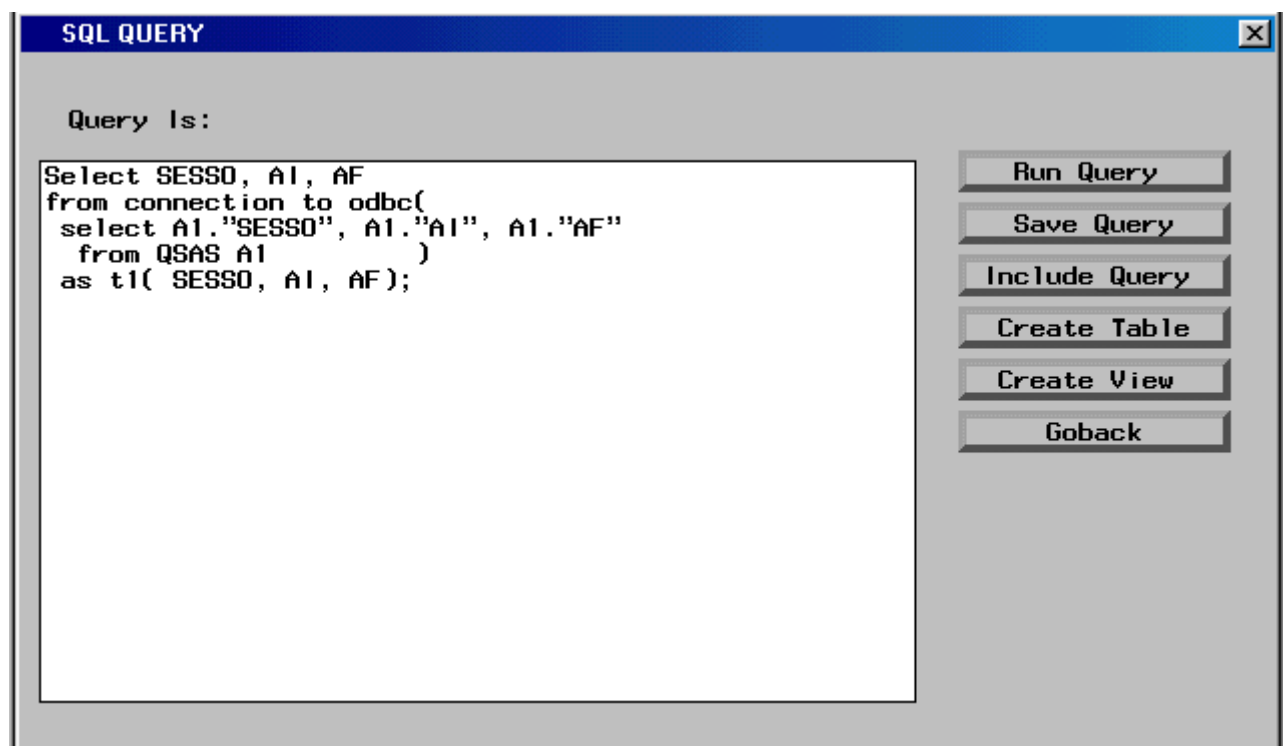


Verrà visualizzato l'elenco dei campi, quindi selezionare i campi

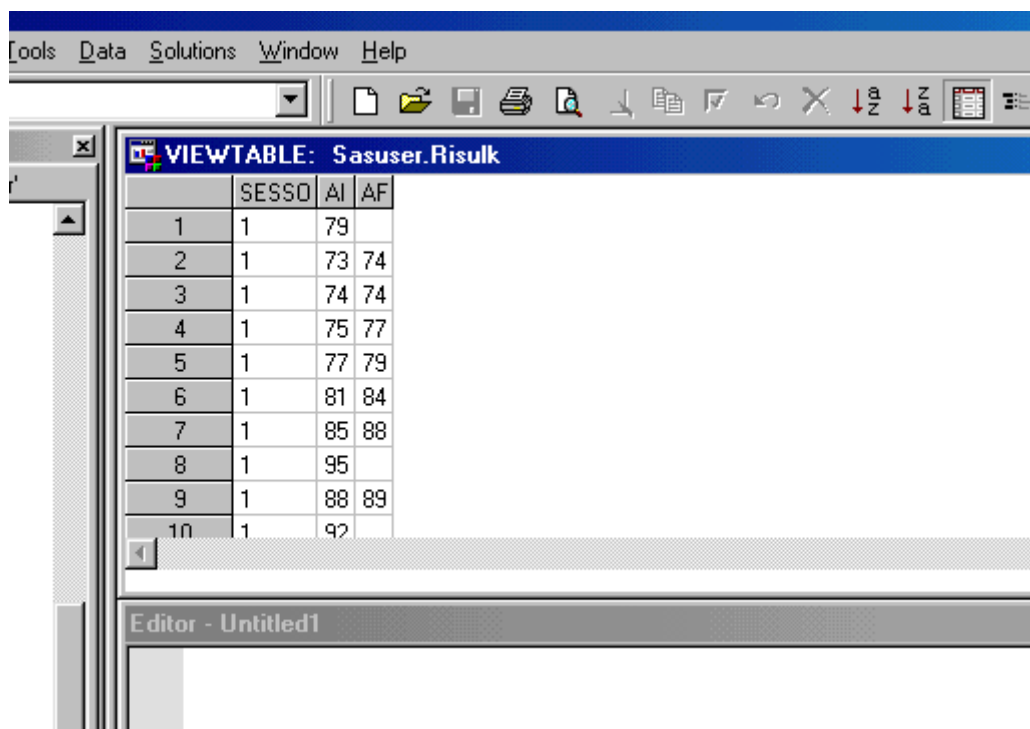


Per eseguire la query selezionare Tools | Run query | Run immediate

Selezionare Tools | Show Query (si apre la maschera SQL Query)



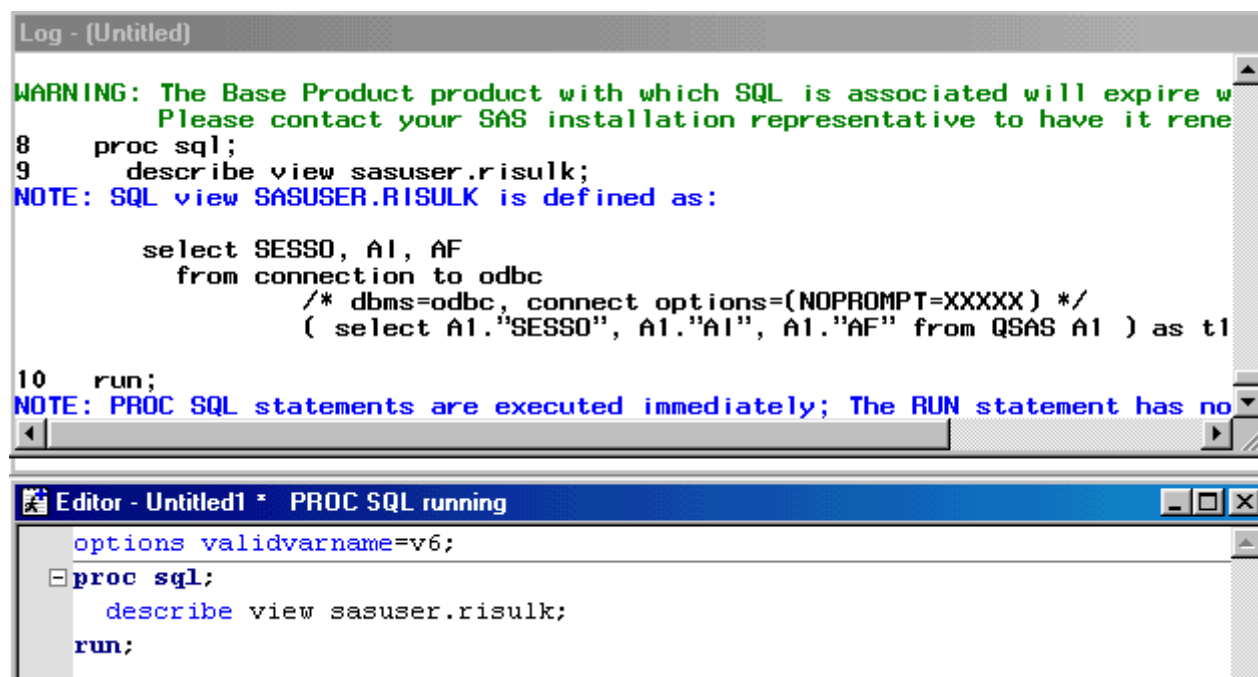
Aprendo la view si visualizza il risultato della query



	SESSO	AI	AF
1	1	79	
2	1	73	74
3	1	74	74
4	1	75	77
5	1	77	79
6	1	81	84
7	1	85	88
8	1	95	
9	1	88	89
10	1	92	

Modificando i criteri di selezione nella query, automaticamente si ritrovano nella view, tutte le volte che viene richiamata.

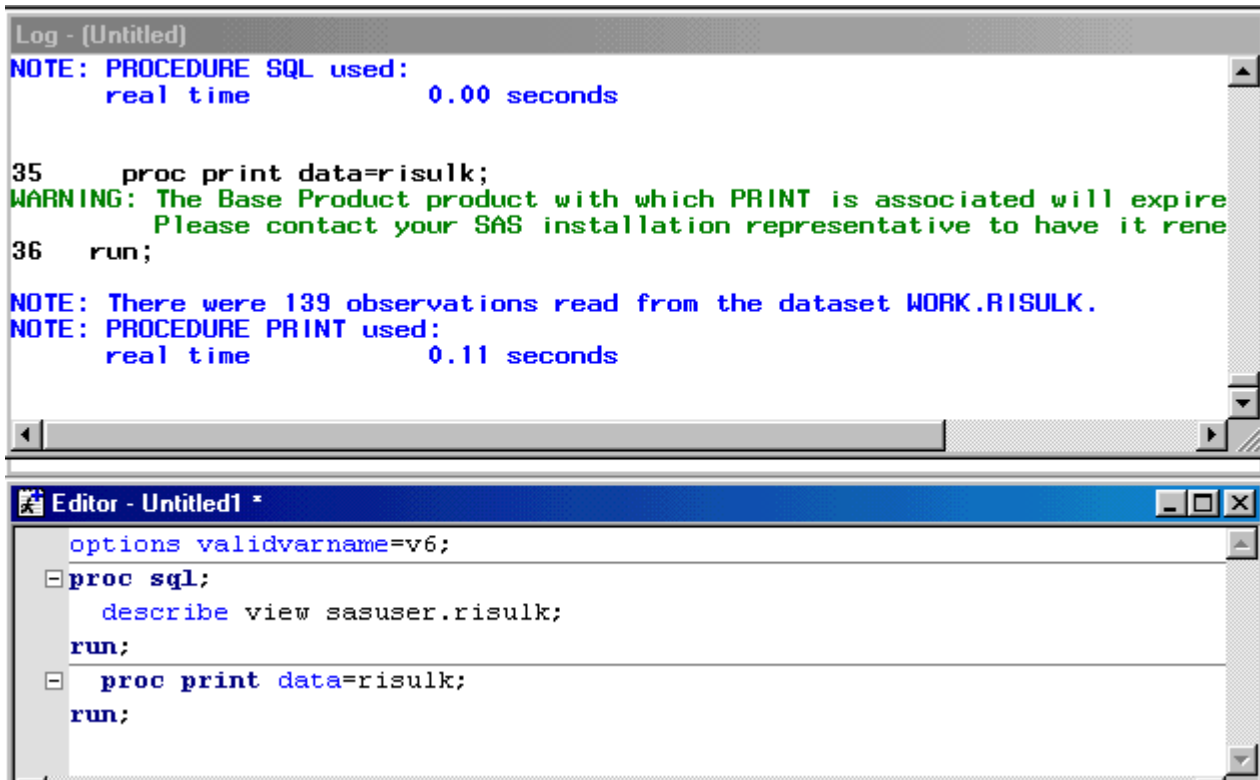
Esempi di elaborazione:



```
Log - (Untitled)
WARNING: The Base Product product with which SQL is associated will expire w
Please contact your SAS installation representative to have it rene
8 proc sql;
9 describe view sasuser.risulk;
NOTE: SQL view SASUSER.RISULK is defined as:

select SESSO, AI, AF
from connection to odbc
/* dbms=odbc, connect options=(NOPROMPT=XXXXX) */
( select AI."SESSO", AI."AI", AI."AF" from QSAS AI ) as t1
10 run;
NOTE: PROC SQL statements are executed immediately; The RUN statement has no

Editor - Untitled1 * PROC SQL running
options validvarname=v6;
proc sql;
describe view sasuser.risulk;
run;
```



ed il risultato

Output - (Untitled)

The SAS System 21:45 Monday, January 22, 2001

Obs	SESSO	AI	AF
1	1	79	
2	1	73	74
3	1	74	74
4	1	75	77
5	1	77	79
6	1	81	84
7	1	85	88
8	1	95	
9	1	88	89
10	1	92	
11	1	89	94
12	1	94	
13	1	80	82
14	1	82	
15	1	68	69
16	1	74	75
17	1	78	79
18	1	80	
19	1	67	70
20	1	87	88
21	1	88	93
22	1	93	93
...